




# INOX - IVR 668




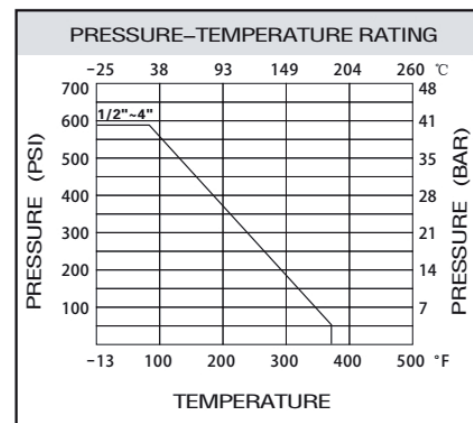
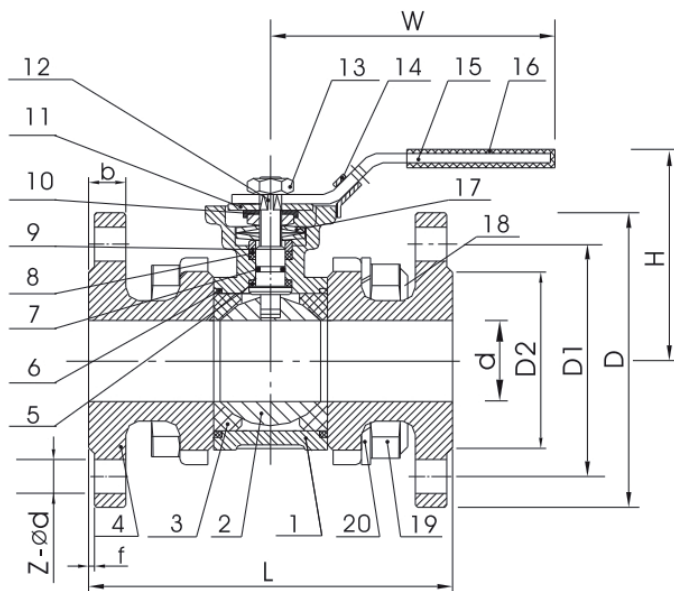
 Valvola a sfera in tre pezzi in acciaio inox AISI 316  
- attacchi flangiati - flangia ISO 5211

 Three-piece ball valve in stainless steel AISI 316  
- flanged connections - flange ISO 5211

 Kugelhahn dreiteilig aus Innoxstahl AISI 316  
- mit geflanschten Gewinden - Flansche ISO

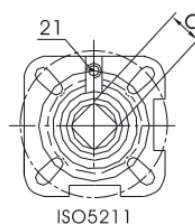
 Vanne à boisseau sphérique en trois pièces en acier inox AISI 316  
- fixations bridées - bride ISO 5211

 Трёхсоставной кран из нержавеющей стали AISI 316  
- фланцевые соединения - фланец ISO 5211



Size   
DN15-DN100 40 bar

Max  
+180° C  
Min  
-25 C



## DIMENSION LIST

SIZE	d	D	L	H	W	c	D1	D2	b	f	Z-Ød1	ISO5211	N · m	Kgs
DN15	15	95	130	88	137	9	65	45	16	2	4-Ø14	F03/F04	5	2.00
DN20	20	105	150	90	154	11	75	58	18	2	4-Ø14	F04/F05	8	3.10
DN25	25	115	160	96	154	11	85	68	18	2	4-Ø14	F04/F05	10	3.70
DN32	32	140	180	105	223	14	100	78	18	2	4-Ø18	F05/F07	14	5.60
DN40	40	150	200	120	223	14	110	88	18	3	4-Ø18	F05/F07	18	6.90
DN50	50	165	230	130	223	14	125	102	20	3	4-Ø18	F05/F07	25	9.20
DN65	65	185	290	160	255	17	145	122	22	3	8-Ø18	F07/F10	48	15.60
DN80	80	200	310	175	255	17	160	138	24	3	8-Ø18	F07/F10	75	20.00
DN100	100	235	350	200	302	17	190	162	24	3	8-Ø22	F07/F10	110	27.20

## MATERIAL LIST

ITEM	PART	MATERIAL	QTY
1	Body	CF8M	1
2	Ball	SS316	1
3	Ball Seat	R-PTFE (15%)	2
4	Cap	CF8M	2
5	Thrust Washer	PTFE	1
6	Body Gasket	PTFE	2
7	O-ring	VITON	1
8	Stem Packing	PTFE	1
9	Gland	SS316	1
10	Nut Stopper	SS304	1
11	Plate Washer	SS304	1
12	Stem	SS316	1
13	Nut	SS304	2
14	Lock Device	SS304	1
15	Handle	SS304	1
16	Handle Cover	Plastic	1
17	Belleville Washer	SS301	2
18	Bolt	SS304	4 (6)
19	Nut	SS304	8 (12)
20	Spring Washer	SS304	8 (12)
21	Stop Pin	SS304	1