





INOX - IVR 663




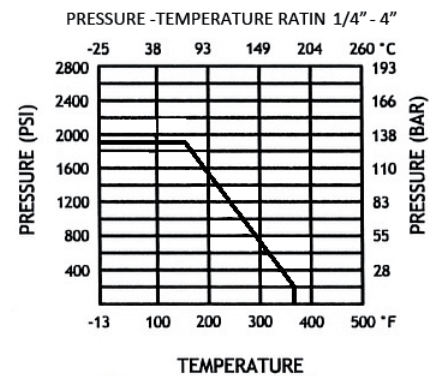
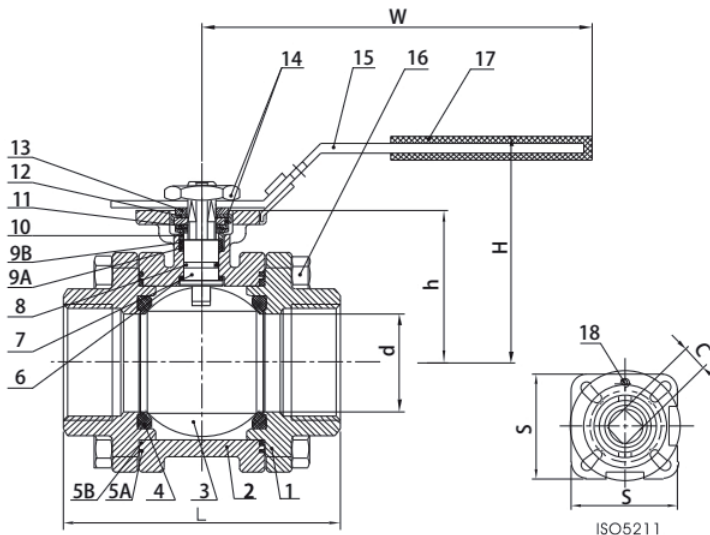
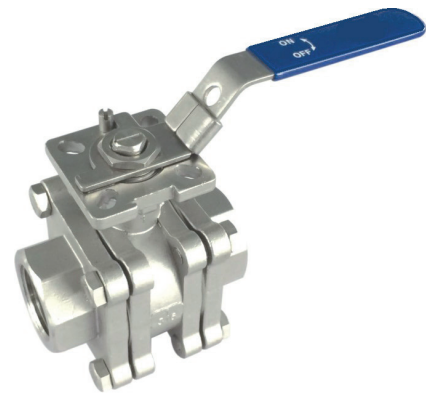
 Valvola a sfera a passaggio totale in tre pezzi in acciaio inox AISI 316
- attacchi F/F - flangia ISO 5211

 Three-piece full bore ball valve in stainless steel AISI 316
- F/F - ISO 5211 flange

 Kugelhahn dreiteilig mit vollem Durchgang aus Edelstahl AISI 316
- IG/IG - Flansch ISO 5211

 Vanne à boisseau sphérique à passage intégral en trois pièces
en acier inox AISI 316 - F/F - bride ISO 5211

 Трёхсоставной полнопроходной шаровой кран из
нержавеющей стали AISI 316
- Соединения В/В - фланец ISO 5211



Size
1/4" - 4" 130 bar

Max
+180° C
Min
-25 C

Estremità filettate
UNI EN 10226-1

DIMENSION LIST

| SIZE | d | L | H | h | W | C | ISO5211 | N · m | Kgs |
|--------|------|-----|-----|-------|-----|----|---------|-------|-------|
| 1/4" | 11 | 50 | 70 | 42 | 117 | 9 | F03/F04 | 5 | |
| 3/8" | 12.5 | 60 | 70 | 42 | 117 | 9 | F03/F04 | 5 | |
| 1/2" | 15 | 75 | 70 | 42 | 117 | 9 | F03/F04 | 5 | 0.60 |
| 3/4" | 20 | 80 | 78 | 50 | 134 | 11 | F04/F05 | 8 | 1.06 |
| 1" | 25 | 90 | 87 | 58 | 134 | 11 | F04/F05 | 10 | 1.41 |
| 1 1/4" | 32 | 110 | 98 | 64 | 203 | 14 | F05/F07 | 14 | 2.32 |
| 1-1/2" | 40 | 120 | 104 | 69.5 | 203 | 14 | F05/F07 | 18 | 3.26 |
| 2" | 50 | 140 | 112 | 78 | 203 | 14 | F05/F07 | 25 | 4.13 |
| 2-1/2" | 65 | 185 | 140 | 100 | 255 | 17 | F07/F10 | 48 | 8.58 |
| 3" | 80 | 205 | 153 | 112.5 | 255 | 17 | F07/F10 | 75 | 13.30 |
| 4" | 100 | 240 | 166 | 125.5 | 302 | 17 | F07/F10 | 110 | 22.30 |

MATERIAL LIST

| ITEM | PART | MATERIAL | QTY |
|------|-------------------|----------|-----|
| 1 | Cap | CF8M | 1 |
| 2 | Body | CF8M | 1 |
| 3 | Ball | SS316 | 1 |
| 4 | Ball Seat | PTFE | 2 |
| 5A | Body GasketA | PTFE | 1 |
| 5B | Body GasketB | PTFE | 1 |
| 6 | Thrust Washer | PTFE | 1 |
| 7 | Stem | SS316 | 1 |
| 8 | O-ring | VITON | 1 |
| 9A | Stem PackingA | PTFE | 1 |
| 9B | Stem PackingB | PTFE | 1 |
| 10 | Gland | SS304 | 1 |
| 11 | Belleville Washer | SS301 | 2 |
| 12 | Nut Stopper | SS304 | 1 |
| 13 | Plate Washer | SS304 | 1 |
| 14 | Nut | SS304 | 2 |
| 15 | Handle | SS304 | 1 |
| 16 | Bolt | SS304 | 4 |
| 17 | Handle Cover | Plastic | 1 |
| 18 | Stop Pin | SS304 | 1 |

Tutte le caratteristiche tecniche dei prodotti sono soggette a modifiche senza preavviso - All product's technical specifications are subject to modification without prior notice