



 Rubinetto a sfera sottolavabo con filtro e snodo, provvisto di filtro inox e rosone - finitura cromata lucida

 Under-sink ball valve with filter and ball joint, equipped with filter in stainless steel and rosette - chrome-plated

 Unterspülekgelhahn mit Schmutzfänger und Verbindung, ausgestattet mit Schmutzfänger aus rostfreiem Stahl und Rosette

 Robinet à boisseau sphérique sous lavabo avec filtre et joint, pourvu de filtre en acier inox et rosette - chromé

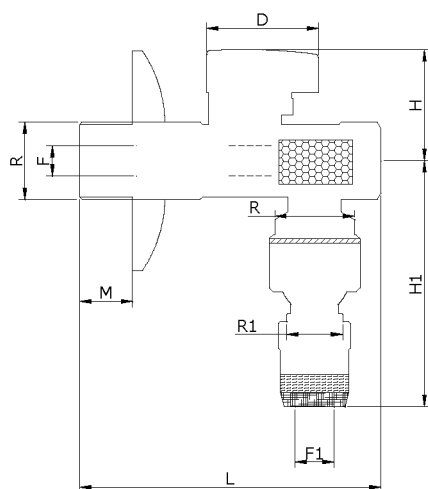
 Шаровой кран под раковину с фильтром и шарниром, оснащен фильтром из нержавеющей стали и круглой насадкой - полированная хромированная отделка



CARATTERISTICHE - FEATURES

- corpo, in ottone CW617N.
- asta tappo sfera e ghiera in ottone CW614N
- sfera lavorata con utensile in diamante, cromata.
- sedi di tenuta sfera O-rings.
- guarnizione tenuta asta: O-ring in gomma NBR
- leva in plastica cromata ABS.
- filtro in acciaio inox
- rosone in acciaio inox
- PN 10 -100°C
- *brass CW617N body.*
- *brass CW614N stem ball cap and lock nut*
- *ball ground by diamond-tipped tool, chromium plated.*
- *O-rings seats.*
- *O-ring stem packing in NBR rubber.*
- *ABS handle chromium plated*
- *Stainless steel filter*
- *Stainless steel base ring*
- *PN 10 -100°C*

DIMENSIONI PRINCIPALI - LEADING DIMENSIONS



RxR1	1/2"x3/8"	
F	8	
L	65	
H	29	
H1	55	
F1	10.2	
M	12	
D	31	